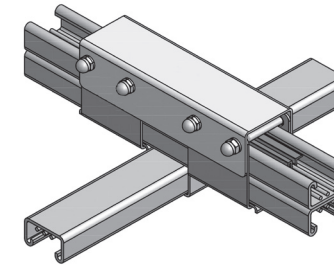
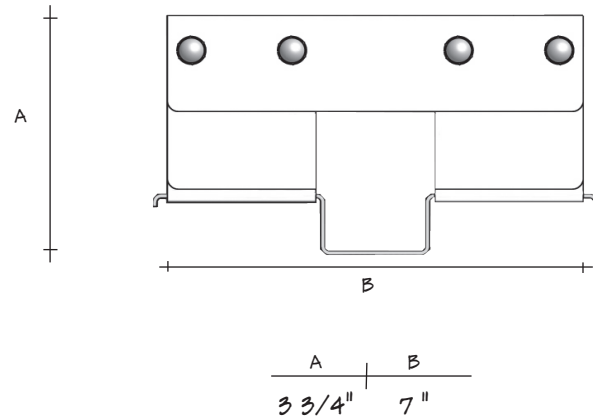




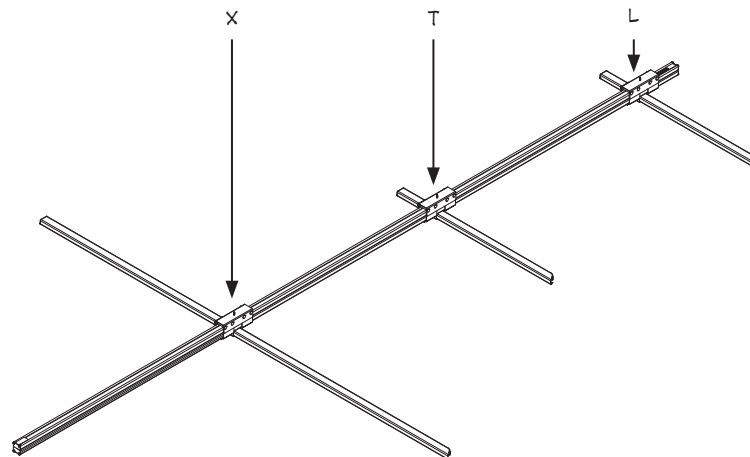
CROSSOVER (2/1)  
for use as L, T, X



busSTRUT (double-deck)		
Product	Length	Catalog Number
2/1	Double Single	CD-S-(F)

Finish - G=Galvanized W=White B=Black

TWO over ONE crossovers are for use with three busSTRUT lengths. Each crossover is a pre-assembled four part unit for building L,T,X crossover grid configurations. The saddle bracket supports the perpendicular busSTRUT. 1/4"-20 bolts slide through to secure, align, and lock both halves of the assembly in one direction.



Crossovers provide the mechanical connection for building runs, rows, and grids. One universal crossover serves as an X,T, or an L intercept. The TWO over ONE crossover is used when one double-deck length of busSTRUT intersects a single-deck length of busSTRUT.